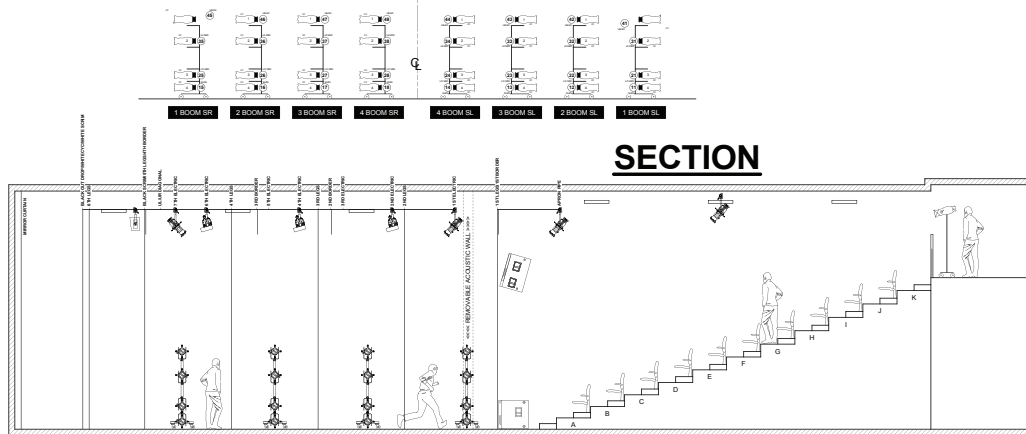
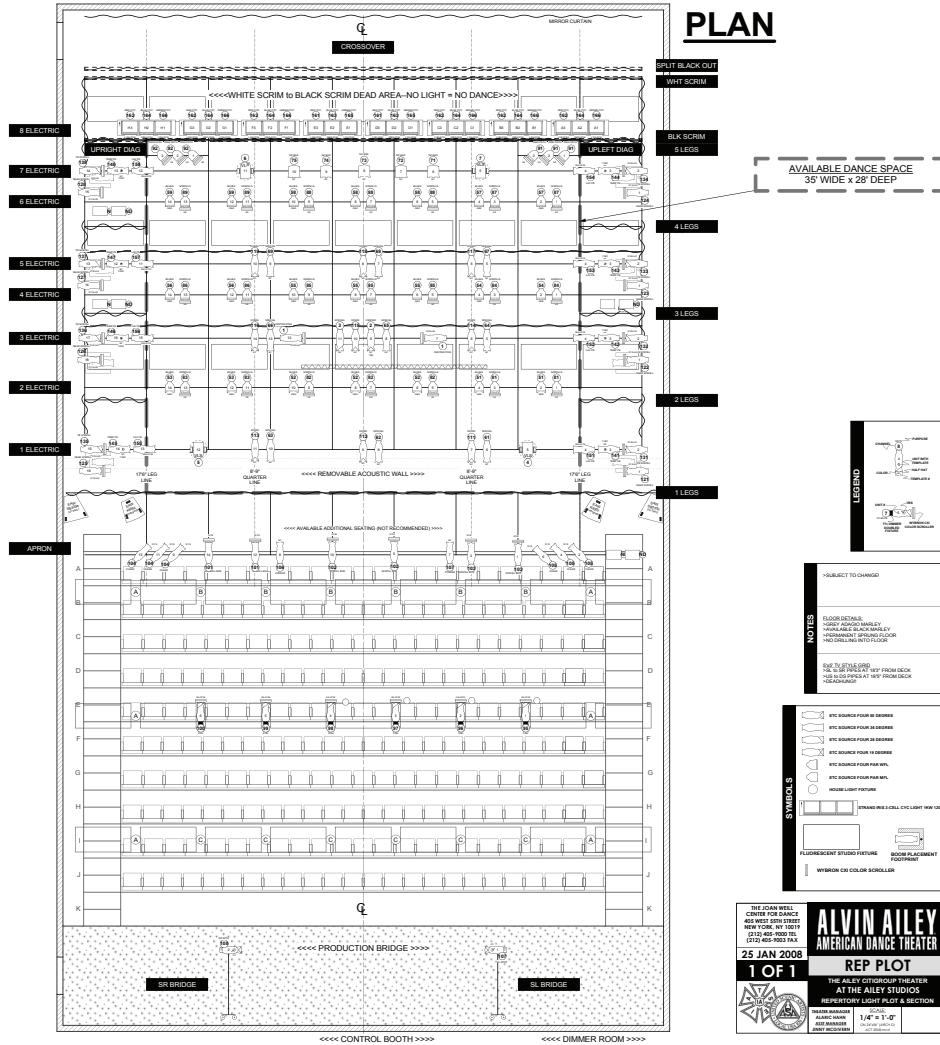


AILEY CITIGROUP THEATER LIGHT PLOT



AILEY CITIGROUP THEATER MAGIC SHEET

VectorWorks Educational Version

BOOMS

HEAD HIGH	
48	44
47	43
46	42
45	41
COLOR	

UPPER MIDS	
38	34
37	33
36	32
35	31
COLOR	

LOWER MIDS	
28	24
27	23
26	22
25	21
COLOR	

SHINS	
18	14
17	13
16	12
15	11
COLOR	

BACKS

SCROLL BAX		
89 179/189	88 176/188	87 177/187
86 176/186	85 175/185	84 174/184
83 173/183	82 172/182	81 171/181

BLUE BAX		
59	58	57
56	55	54
53	52	51

DIAG PATH	
92 193/194	91 191/192

CYC		
RED		
162	161	162
GREEN		
164	163	164
BLUE		
166	165	166

PIPE ENDS

LAV PE R54	
154	158
153	157
152	156
151	155

TEMP PE	
144	148
143	147
142	146
141	145

SCROLL PE	
134 234/244	138 238/248
133 233/243	137 237/247
132 232/242	136 236/246
131 231/241	135 235/245

NEAR SCROLLS	
128 218/228	124 214/224
127 217/227	123 213/223
126 216/226	122 212/222
125 215/225	121 211/221

POOLS

CENTER POOL
1 167/168

NC POOLS	
2 50 degree	3 28 degree

2K FRESNEL BAX				
75	74	73	72	71

DOWN POOLS		
119	118	117
116	115	114
113	112	111

36 POOLS		
69	68	67
66	65	64
63	62	61

FRONT OF HOUSE		
PODIUM		
106	107	
104	105	
CLEAR FRONTS (CROSSED)		
101 203/204	102	103 201/202
SCROLL BOXES (US FILL)		
SCROLL FRONTS (DS STRAIGHT WASH)		
100 200/210	99 199/209	98 198/208
97 197/207	96 196/206	95 195/205

AILEY CITIGROUP THEATER REP LIGHT PLOT MAGIC SHEET

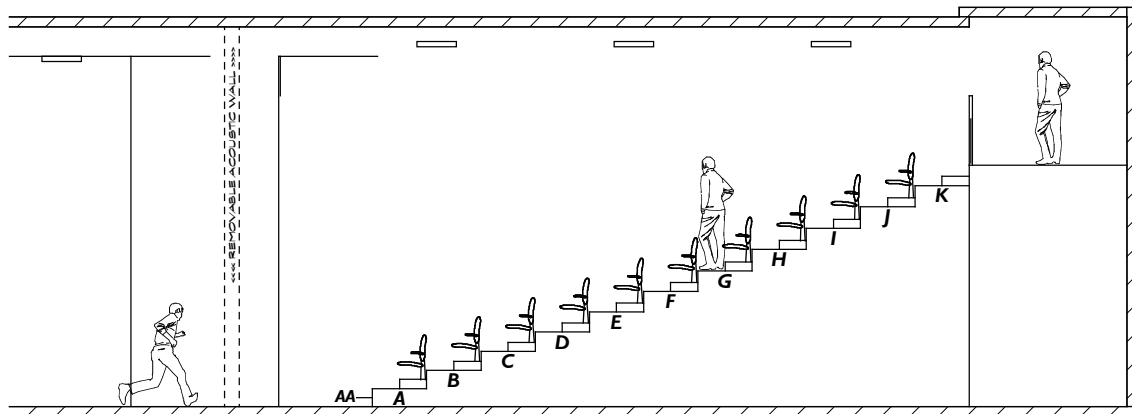
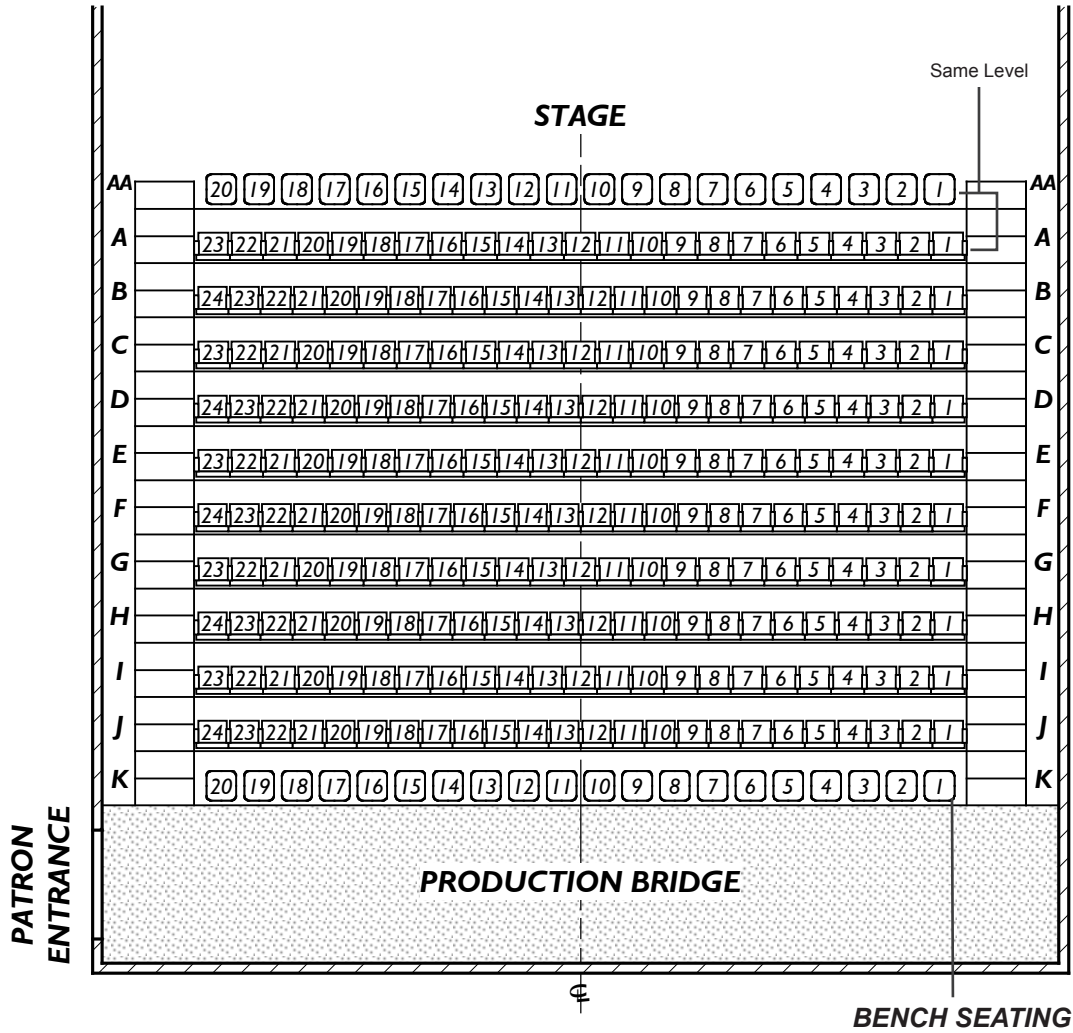
Questions?
ALARIC HAHN
212-405-9056
DATE: 1/25/08

220 PROD BRIDGE
230 NORTH FLUOROS
240 SOUTH FLUOROS
249 AISLES (STAIRS)
250 HOUSE

SCROLLER MACROS
M*19 Startup
M*99 Shutdown

AILEY CITIGROUP THEATER SEATING LAYOUT

(235 Permanent Seats + 40 Chairs = 275 Total) – Scale: 1/8" = 1'-0"



AILEY CITIGROUP THEATER THEATER INVENTORY

*Inventory does not include equipment in rep / **Additional cost - Not included in theater rental fee

Audio Equipment		(Audio Equipment Continued...)			
Console		Cable			
MIDAS VERONA (24 channels)		Snake with 12 Male XLR, 4 Female XLR		50'	1
Components (Rack Mounted)		XLR Cable	Yellow	100'	14
2 Tascam CD - O1U players		XLR Cable	Orange	50'	17
1 American Audio MCD1100 CD player		XLR Cable	Purple	25'	14
1 Denon DN-V210 (HDMI) DVD player		XLR Cable	Green	10'	1
1 Klark Teknik DN9340 Digital Reverb		Female XLR - Male ¼"		15'	2
1 Yamaha SPX 2000 Professional Multi Effects Processor		Stands			
2 Klark Teknik Helix DN9344E Quad EQ		Tripod Boom Mic Stands			3
1 Tascam DA-20-Mk2 DAT recorder		Boom Arm Mic Stand			1
Additional Components (*Use included with Projector Fee)		Ultimate Stands - Speakers			4
2 Philips DVP5990 Upconverting 1080P DVD players **		Standard Mic Stands			3
1 Denon DN-V210 (HDMI) DVD players **		Small Tabletop Mic Stands			4
2 SONY BDB-S350 Blue Ray Players **		Music Stands			5
Speakers and Amps		Other			
Center Cluster:		Large Mic Clips			10
2 Meyer UPJ		Soldering Gun			1
Left/Right PA system:		Sony 5706 Headphones			2
1L/1R Meyer UPA		Lighting Equipment			
1L/1R EAWK650Z		Console			
1L/1R EAWSB330E sub series		ETC Ion (with remote)			
Stage Monitors:		Stage Cable			
1L/1R EV 12A (grid mounted)		Stage Pin	Blue	2'	2
Available Monitors:			Red	5'	11
4 UPJ Wedges (\$50 ea/week) *			Green	10'	18
Mics			White	15'	20
Shure Wireless Handheld Mic	9		Purple	25'	3
Shure Wireless Lavalier	10		Orange	50'	1
Non-profit Rate: \$15 mic/week			Yellow	100'	
Standard Rate: \$25 mic/week					
Shure SM58 Wired Mic	5	Two-Fer			10
Beta 87 Wired Mics	6	Adapter: Female Edison - Male Stage Pin			4
JKIS09002 Switched Wired Mic	2	Edison	Green	10'	3
			Purple	25'	1
			Orange	50'	2
		Female Stage Pin - Male Edison	Orange	50'	1

AILEY CITIGROUP THEATER THEATER INVENTORY

*Inventory does not include equipment in rep / **Additional cost - Not included in theater rental fee

Lighting Equipment <i>(Continued...)</i>				Other			
Hardware							
Cheeseboroughs	dumb		6	Furniture Dollies			2
	smart		6	25 lb. Sandbags			6
Sidearms			2	Dimmer Doubler			8
C Clamps			10	Spare S4 Scroller			2
S4 Gel Frames			many	Spare S4 PAR Scroller			1
S4 Gel Frames (cardboard)			many	4 x 8 pieces of Masonite			15
S4 PAR Gel Frames			few	100 AMP Power Distribution (20 Edison outlets; Tails needed for tie in Max 100 AMP)			1
<i>* Note: All rep units, including booms, are pre-framed</i>				Edison Power Strips			2
Type A Template Holders			7	Single Man AC powered Genie Lift (operation is Ailey staff ONLY)			1
Type B Template Holders			13	Scaffolding (buildable) 30 in x 6 ft			1
Type A Glass Template Holders			2	Mirrorball			1
S4 Iris			5	Boombox			1
Small Base Plates			2	Hung Drapery (*on tracks/cannot be moved)			
S4 Tophats				Split Black Traveller *			1
S4 Half Hats				White Cyc/White Scrim *			1
S4 Par Tophats				Black Scrim *			1
S4 Par Half Hats				Pairs of Black Legs			5
S4 10 Degree Tophats				Black Borders			4
S4 10 Degree Half Hats				Theater Dimensions			
Projection Equipment				Leg to Leg (onstage edge to onstage edge)	35'		
Panasonic PT-D77 007U-K DLP Projector (7,700 lumens)**			1	DS Marley Edge to Black Scrim	5'		
Panasonic ET-D75LE1 (short throw lens) **			1	DS Marley Edge to White Scrim	10'		
Panasonic ET-D75LE3 (medium throw lens) **			1	Floor to Grid	15'		
Panasonic ET-D75LE4 (long throw lens) **			1	Back Bridge to White Cyc	25'		
Non Profit Rate: \$150/day **				Crossover (from back of split black traveller to US wall)	50'		
Standard Rate: \$250/day**				Clear Com Stations (Daisy Chain Possible)			
<i>Use of Lenses included with projector fee.</i>				Lighting Booth			
				Sound Console			
				DSL			
				DSR			
				Green Room			
				<i>* All items are subject to availability.</i>			